

# LIGHTWORX

C A T A L O G







**LED**, OR "LIGHT-EMITTING DIODE", IS A SEMICONDUCTOR DIODE THAT EMITS HIGH-EFFICIENCY, LOW-INTENSITY LIGHT.



**COB**, OR "CHIP ON BOARD" LIGHTS, ARE LEDs MOUNTED DIRECTLY ONTO A CIRCUIT BOARD, CREATING SUPER HIGH INTENSITY LIGHT.

# LIGHTS

**NEW**

## ITEM 2974

### SLIM MAGNETIC WORKLIGHT

- Sleek, rechargeable COB light technology with pocket clip and magnetic base.
- On/off push button with white, red and red strobe functions.
- Mounting hole on clip.
- Charging cable included.
- Available in black.

**MIN  
50**

**SIZE:** 4.80"L x 0.98"W x 0.33"D  
**IMPRINT SIZE:** 1.60"L x 0.50"H/Front  
**IMPRINT METHOD:** Laser Engrave  
**PACKAGING:** Box  
**WEIGHT:** 9.4 lbs per 100 Units



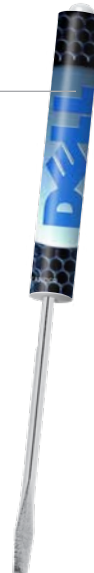
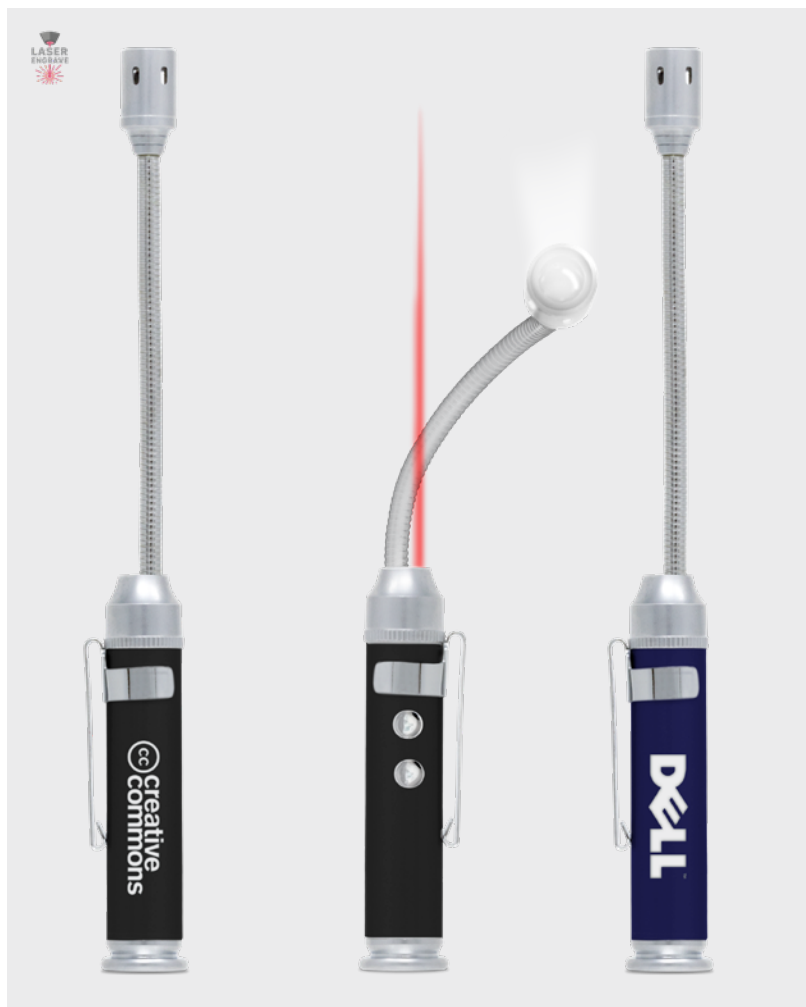
## ITEM 2933

### FLEX LIGHT + LASER

- Magnetic bottom.
- LED light with flexible neck, red laser in body.
- Push on/off button.
- 3-LR41 batteries included.
- Available in black or blue.

**MIN  
100**

**SIZE:** 6.50"L x 0.63"W  
**IMPRINT SIZE:** 1.29"L x 0.31"H/Barrel  
**IMPRINT METHOD:** Laser Engrave  
**PACKAGING:** Poly Bag  
**WEIGHT:** 6.0 lbs per 100 Units



## ITEM 2930 LIGHTED MAGNETIC GRIPPER PICKUP TOOL

Great for finding and retrieving small metal parts behind confined areas.

- 23" fully extended, retrieves up to 3 pounds.
- Twist-action on/off LED light with magnetic tip illuminates dark, hard to reach areas.
- 3-AG13 batteries included.
- Available in black.

**MIN**  
**100**

**SIZE:** 7.55"L x 0.69"W

**IMPRINT SIZE:** 2.25"L x 0.30"H/Handle

**IMPRINT METHOD:** Pad Print

**PACKAGING:** Poly Bag

**WEIGHT:** 17.0 lbs per 100 Units



## ITEM 2938 TELESCOPING FLEX FLASHLIGHT

Great for finding and retrieving small metal parts behind confined areas.

- Metal body with magnetic base.
- Flexible magnetic tip with three bright LED lights can retrieve up to 3 lbs and extend 22".
- 23 lumens with push on/off button, 4-LR44 batteries included.
- Available in black or blue.

**MIN**  
**50**

**SIZE:** 6.56"L x 0.81"W

**IMPRINT SIZE:** 2.00"L x 0.38"H/Front

**IMPRINT METHOD:** Laser Engrave

**PACKAGING:** Poly Bag

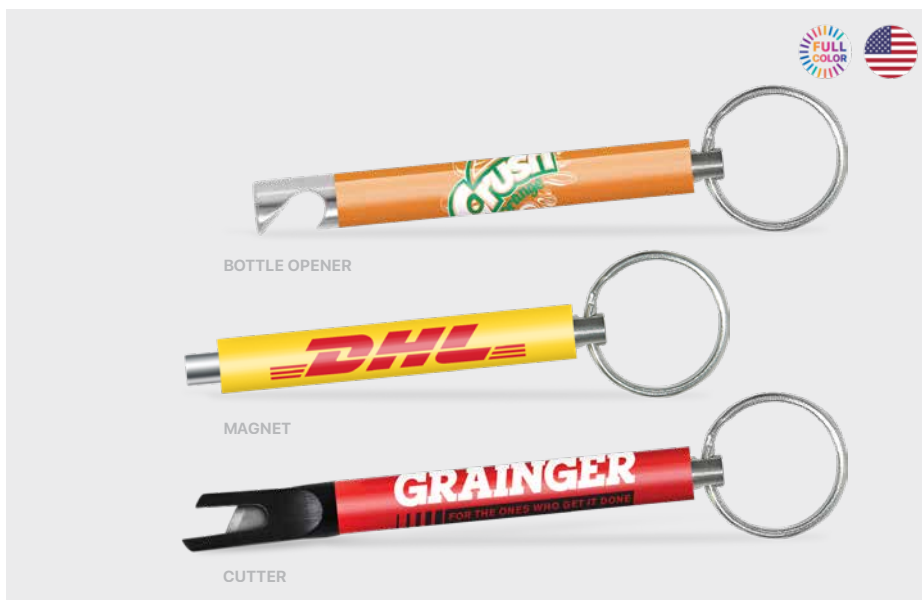
**WEIGHT:** 24.0 lbs per 100 Units





**ITEM 2200****POCKET PARTNER™ KEY TAG**

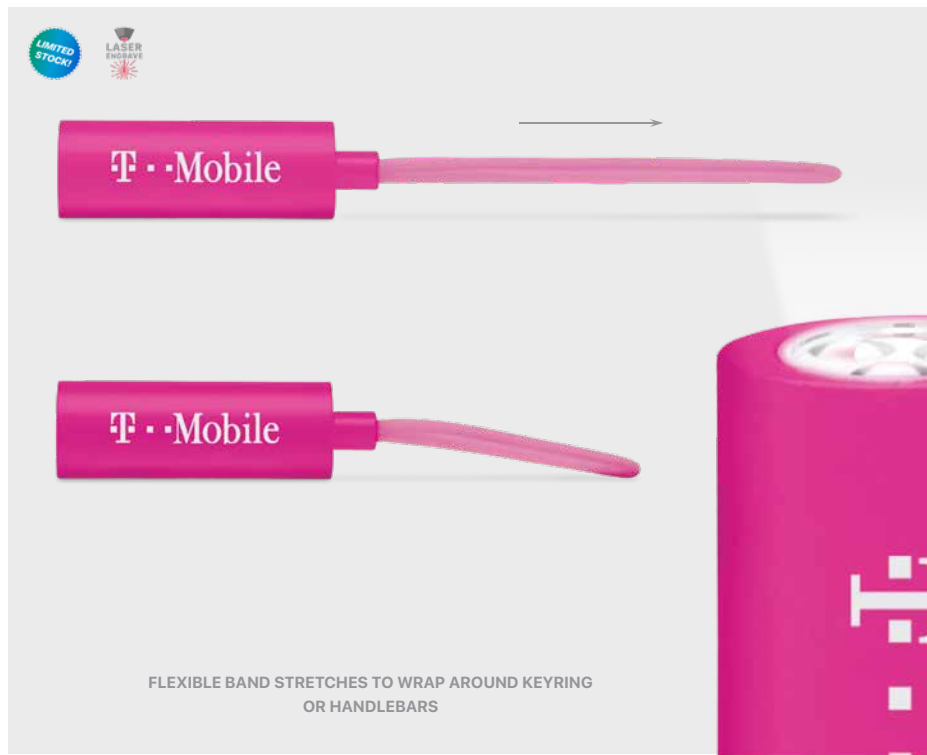
- Split key ring on 0.40" handle.
- Choice of bottle opener, magnet top or cutter are standard, other tools available at additional cost. See page 8.

**MIN  
200****SIZE:** 4.88"L x 1.13"W**IMPRINT SIZE:** 2.00"L x 0.94"H/Barrel**IMPRINT METHOD:** Screen/ColorBurst™**PACKAGING:** Poly Bag**WEIGHT:** 5.0 lbs per 100 Units**HANDLE COLORS**
**MADE  
IN USA**  
TOWANDA, IL
**BLACK****WHITE****METALLIC GRAY** PMS 430**RED** PMS 189**BURGUNDY** PMS 229**ORANGE** PMS 151**YELLOW** PMS 109**GREEN** PMS 802**BLUE** PMS 661**NAVY** PMS 280**ITEM 2292 INSPECTION MIRROR/PICKUP TOOL**

Great for finding and retrieving small metal parts behind confined areas.

- 25" telescoping shaft, retrieves up to 1 pound.
- Strong and compact, 0.50" handle.
- 1.5" pivoting mirror.

**MIN  
50****SIZE:** 7.38"L x 1.50"W**IMPRINT SIZE:** 2.00"L x 1.25"H/Barrel**IMPRINT METHOD:** Screen/ColorBurst™**PACKAGING:** Poly Bag**WEIGHT:** 13.0 lbs per 100 Units



## ITEM 2929 SILICONE BAND KEYCHAIN LIGHT

Wraps around key ring or handlebars when biking, running, hiking, or camping.

- Aluminum body 30 lumen LED light with on/off functions.
- Flexible silicone strap.
- 3 LR44 batteries included.
- Available in pink.

**MIN  
250**

**SIZE:** 2.375"L x 0.875"W x 0.375"D  
**IMPRINT SIZE:** 2.00"L x 0.50"H / Front,  
 1.00"L x 0.50"H / Back  
**IMPRINT METHOD:** Laser Engrave  
**PACKAGING:** Poly Bag  
**WEIGHT:** 8.0 lbs per 100 Units



## ITEM 2919 SOLAR CARABINER CLIP LIGHT

Extremely bright, easily attaches to belt loops and backpacks.

- Silicone matte finish body, on/off switch, solar panel on back side.
- 8 hour solar charge = 3 hours light.
- 2 LED lights.
- Carabiner spring clip.
- Available in black.

**MIN  
100**

**SIZE:** 4.06"L x 1.58"W  
**IMPRINT SIZE:** 1.75"L x 0.75"H / Front  
**IMPRINT METHOD:** Screen Print  
**PACKAGING:** Poly Bag  
**WEIGHT:** 6.0 lbs per 100 Units



**ITEM 2971** CYCLOPS COB WORKLIGHT

Intensely bright, illuminates any dim-lit workspace.

- Cutting-edge COB light technology with high, low and strobe functions.
- Magnetic base with screw slots for easy fastening to any surface.
- Removable light for convenient hand held use.
- 3 AAA batteries included.
- Available in white.

**MIN**  
**50**

**SIZE:** 3.00"L x 3.00"W  
**IMPRINT SIZE:** 1.00"L x 1.00"H/Back  
**IMPRINT METHOD:** Pad Print  
**PACKAGING:** Box  
**WEIGHT:** 50.0 lbs per 100 Units

**ITEM 2264****MULTI-TOOL CARABINER**

- Small, compact, lightweight – perfect outdoor accessory.
- Metal body with expandable knife, LED light, bottle opener and carabiner clip.
- 3-LR621 batteries included.
- Available in gunmetal.

**MIN**  
**100**

**SIZE:** 3.53"L x 1.50"W  
**IMPRINT SIZE:** 1.45"L x 0.70"H/Front  
**IMPRINT METHOD:** Laser Engrave  
**PACKAGING:** Poly Bag  
**WEIGHT:** 5.5 lbs per 100 Units



# ROUND MAGNETIC BOWLS



## ITEM 2516 MINI MAGNETIC ACCESSORY BOWL

Ideal for storing and organizing small items (nuts, bolts, clips) at your desk or work space – use at any angle.

- 3" stainless steel bowl
- 1.625" magnet on bottom.
- Rubber coated magnetic base prevents scratches on finished surfaces.
- Available in stainless steel.

**MIN 100** **SIZE:** 3.00"Dia. x 1.25"D  
**IMPRINT SIZE:** 1.25"Dia./Laser  
 1.50"Dia./Decal  
**IMPRINT METHOD:** Laser/Decal  
**PACKAGING:** Poly Bag  
**WEIGHT:** 18.0 lbs per 100 Units



## 2517 MINI MAGNETIC ACCESSORY BOWL + PAPER CLIPS

Ideal for storing and organizing small items (nuts, bolts, clips) at your desk or work space – use at any angle.

- 3" stainless steel bowl, 1.625" magnet on bottom.
- Rubber coated magnetic base prevents scratches on finished surfaces.
- Includes 20 multi colored paper clips.
- Window Box Packaging.

**MIN 50** **SIZE:** 3.00"Dia. x 1.25"D  
**IMPRINT SIZE:** 1.25"Dia./Laser  
 1.50"Dia./Decal  
**IMPRINT METHOD:** Laser/Decal  
**PACKAGING:** Kraft Window Box  
**WEIGHT:** 18.0 lbs per 100 Units





## ITEM 2515 MAGNETIC PARTS BOWL

Ideal for storing small parts (hardware, fasteners) while you work in your garage or workshop – use at any angle.

- 6" stainless steel magnetic bowl.
- 3.25" magnet on bottom.
- Rubber coated magnetic base prevents scratches on finished surfaces.
- Available in stainless steel.

**SIZE:** 6.00"Dia. x 1.50"D

**IMPRINT SIZE:** 2.00"L x 1.75"H/Laser  
3.00" Dia/Decal

**IMPRINT METHOD:** Laser/Decal

**PACKAGING:** Poly Bag

**WEIGHT:** 36.5 lbs per 100 Units

**MIN  
50**



## ITEM 2519 MAGNETIC BOWL SET

Ideal for storing small parts (hardware, fasteners) while you work in your garage or workshop – use at any angle.

- 6" stainless steel magnetic bowl, 3.25" magnet on bottom.
- 3" stainless steel magnetic bowl, 1.625" magnet on bottom.
- Rubber coated magnetic base prevents scratches on finished surfaces.
- Available in stainless steel.

**SIZE:** 6.00"Dia. x 2.00"D

**IMPRINT SIZE:** 2.00"L x 1.75"H,  
1.25"L x 1.25"H/Laser  
3.00" Dia, 1.50" Dia./Decal

**IMPRINT METHOD:** Laser/Decal

**PACKAGING:** Resealable Poly Bag

**WEIGHT:** 82.0 lbs per 100 Units

**MIN  
50**



**ITEM 2009****2-IN-1 MARKER/CUTTER**

- Four section blade with locking slide.
- Felt tip permanent marker.
- Slotted cap for snapping off dull blade pieces.
- Available in blue or black.

**MIN  
200****SIZE:** 5.38"L x 0.75"W**IMPRINT SIZE:** 3.00"L x 0.75"H/Screen

3.50"L x 1.625"H/Full Color Decal

**IMPRINT METHOD:** Screen/Decal**PACKAGING:** Poly Bag**WEIGHT:** 5.0 lbs per 100 Units**ITEM 2122****BOX CUTTER/SCRAPER**

- Single-edge retractable safety razor blade.
- Metal body and cover.
- Removable blade for use as a scraper.
- Available in white.

**MIN  
200****SIZE:** 4.13"L x 0.88"W**IMPRINT SIZE:** 2.50"L x 0.65"H/Screen

2.80"L x 0.75"H/Full Color

**IMPRINT METHOD:** Screen/Digital**PACKAGING:** Bulk**WEIGHT:** 6.0 lbs per 100 Units

**ITEM 2020****SMALL SNAP BLADE CUTTER**

- Compact, lightweight and ergonomic design.
- Removable slotted top to break blades.
- Plastic body, pocket clip, locking slide, replaceable blade.
- Available in white.

**SIZE:** 5.00"L x 0.75"W**IMPRINT SIZE:** 2.00"L x 0.28"H/Handle**IMPRINT METHOD:** Screen/Digital Print**PACKAGING:** Poly Bag**WEIGHT:** 3.0 lbs per 100 Units**MIN  
200****ITEM 2023****MEDIUM SNAP BLADE CUTTER**

- Compact, lightweight and ergonomic design.
- Removable slotted top to break blades.
- Metal reinforced plastic body, pocket clip, locking slide, replaceable blade.
- Available in white.

**SIZE:** 5.68"L x 0.70"W**IMPRINT SIZE:** 2.75"L x 0.28"H/Handle**IMPRINT METHOD:** Screen/Digital**PACKAGING:** Poly Bag**WEIGHT:** 3.0 lbs per 100 Units**MIN  
200****ITEM 2021 LARGE SNAP BLADE CUTTER**

- Compact, lightweight and ergonomic design.
- Removable slotted top safely breaks blade.
- Plastic body, locking slide, replaceable blade.
- Available in white.

**MIN  
200****SIZE:** 6.38"L x 1.38"W**IMPRINT SIZE:** 2.00"L x 0.44"H/Handle**IMPRINT METHOD:** Screen/Digital**PACKAGING:** Poly Bag**WEIGHT:** 9.0 lbs per 100 Units

**ITEM 1228****PAGE MARKER MAGNIFIER**

- 4X magnification, Fresnel lens.
- Extra tab to secure to page. Side ruler markings in inches and centimeters.
- Available in white.

**MIN  
200**
**SIZE:** 7.38"L x 2.50"W**IMPRINT SIZE:** 2.25"L x 2.00"H/Screen Print

2.50"L x 2.25"H/Digital Print

**IMPRINT METHOD:** Screen/Digital**PACKAGING:** Cello Sleeve**WEIGHT:** 1.0 lbs per 100 Units**ITEM 1201****MAGNIFIER/CREDIT CARD HOLDER**

- Stores easily in a purse or wallet for easy access.
- 3X magnification, Fresnel lens.
- Available in white.

**MIN  
200**
**SIZE:** 3.75"L x 2.38"W**IMPRINT SIZE:** 3.00"L x 1.50"H/Front**IMPRINT METHOD:** Screen/Digital**PACKAGING:** Bulk**WEIGHT:** 1.0 lbs per 100 Units**ITEM 1207****LIGHTED DUO MAGNIFIER**

- 3X magnification, 5X magnification bubble.
- LED light on back.
- Available in white.

**MIN  
100**
**SIZE:** 3.85"L x 2.36"W**IMPRINT SIZE:** 1.00"L x 0.70"H/Front

0.45"Dia./Button

**IMPRINT METHOD:** Digital Print**PACKAGING:** Poly Bag**WEIGHT:** 6.0 lbs per 100 Units



## ITEM 1364 PRESIDENTIAL JOURNAL

- Textured finish with rounded corners and ribbon place marker.
- 96 sheets of lined perforated paper.
- Elastic strap closer and pen holder.
- Available in black.

**SIZE:** 8.25"L x 5.75"W  
**IMPRINT SIZE:** 4.00"L x 5.00"H/Front  
**IMPRINT METHOD:** Screen/Digital  
**PACKAGING:** Poly Bag  
**WEIGHT:** 68.1 lbs per 100 Units

**MIN  
50**



## ITEM 1364BK-BX TWO PIECE GIFT BOX

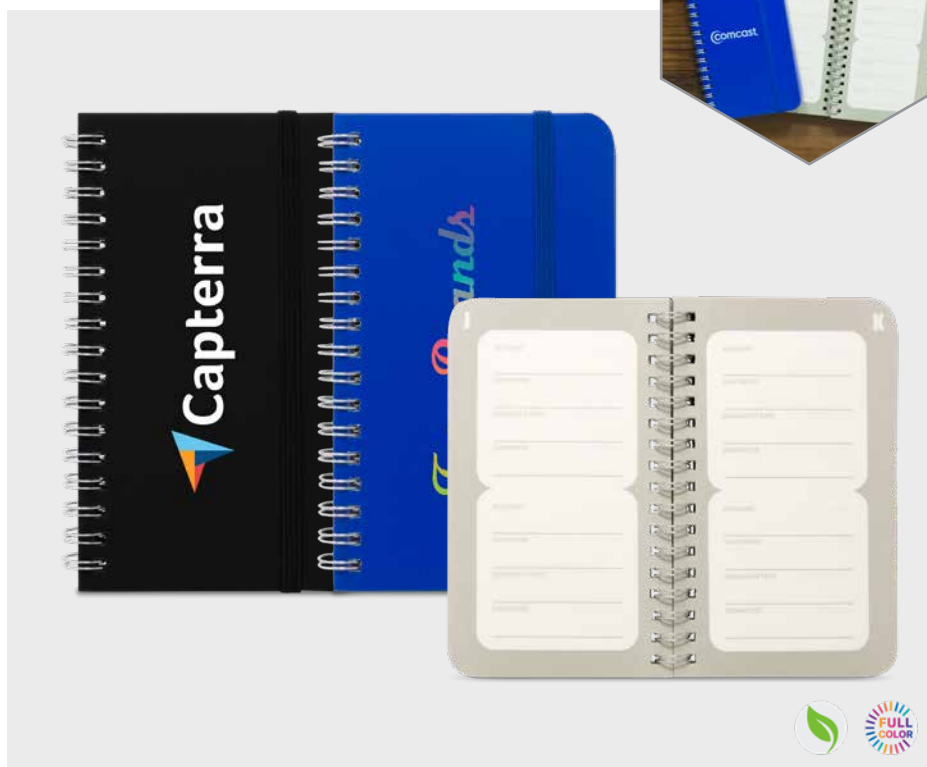
**SIZE:** 8.50"L x 6.00"W  
**IMPRINT SIZE:** 4.00"L x 5.00"H/Front  
**IMPRINT METHOD:** Screen Print

## ITEM 1342 ECO PASSWORD PAD

- Alphabetized pages with space for account, username, password hint, and password.
- Coated cover with metal ring binding and elastic band.
- Made from recycled materials.
- Available in black or blue.

**SIZE:** 6.00"L x 4.00"W  
**IMPRINT SIZE:** 2.00"L x 4.00"H/Front  
**IMPRINT METHOD:** Screen/Digital  
**PACKAGING:** Poly Bag  
**WEIGHT:** 24.5 lbs per 100 Units

**MIN  
100**



# WRITING TOOLS



## LOGO TOP PREMIER PEN & PENCIL

- Metal body with twist action open/close design.
- Writes in black ink or 0.7mm lead.
- Includes logo top and laser engraved barrel imprint for one setup charge.
- Available in black and silver.

### 1133 LOGO TOP PREMIER PENCIL

**MIN  
100**

**SIZE:** 5.63"L x 0.50"W  
**IMPRINT SIZE:** 1.50"L x 0.20"H/Barrel;  
 0.31"Dia/Dome  
**IMPRINT METHOD:** Laser Engrave/  
 Epoxy Dome  
**PACKAGING:** Poly Bag  
**WEIGHT:** 5.7 lbs per 100 Units

### 1134 LOGO TOP PREMIER PEN

**MIN  
100**

**SIZE:** 5.63"L x 0.50"W  
**IMPRINT SIZE:** 1.50"L x 0.20"H/Barrel;  
 0.31"Dia/Dome  
**IMPRINT METHOD:** Laser Engrave/  
 Epoxy Dome  
**PACKAGING:** Poly Bag  
**WEIGHT:** 5.0 lbs per 100 Units

### ITEM 1138 PEN & PENCIL SET

- Metal body pen & pencil set with twist action open/close design
- Pen writes in black ink, pencil writes in 0.7mm lead.
- Packaged in a magnetic slider gift box.
- Includes 2 logo top and 2 laser engraved barrel imprints for one setup charge.
- Available in black and silver.

**MIN  
50**

**SIZE:** 6.50"L x 0.75"W  
**IMPRINT SIZE:** 1.50"L x 0.20"H/Barrel;  
 0.31"Dia/Dome  
**IMPRINT METHOD:** Laser Engrave/  
 Epoxy Dome  
**PACKAGING:** Eco Deluxe Box  
**WEIGHT:** 26.0 lbs per 100 Units

## ITEM 1147 SLIM LOGO TOP PEN

- Metal body with twist action open/close design and nickel pocket clip. Blue ink.
- Available in blue, red, and silver.
- Laser engrave only available on blue and red.

**SIZE:** 5.50"L x 0.50"W  
**IMPRINT SIZE:** 1.50"L x 0.20"H/Barrel;  
 0.31" Dia./Dome  
**IMPRINT METHOD:** Laser Engrave/  
 Screen Print, Epoxy Dome  
**PACKAGING:** Poly Bag  
**WEIGHT:** 4.0 lbs per 100 Units

**MIN  
100**



## ITEM 1144 COBRA™ PEN

- Plastic body with twist action open/close design, writes in blue ink.
- Small size for pockets or check books.
- Available in black with nickel trim or pearl with gold trim.

**SIZE:** 4.75"L x 0.38"W  
**IMPRINT SIZE:** 1.50"L x 1.00"H/Barrel  
**IMPRINT METHOD:** Screen Print  
**PACKAGING:** Poly Bag  
**WEIGHT:** 2.0 lbs per 100 Units

**MIN  
200**



# ORDER INFORMATION

## GENERAL ORDER INFORMATION

**PRODUCTION TIME:** Varies by decoration method. 10-15 working day average. Some items may require a longer production time. Call for more information.

**OVER/UNDER RUNS:** We reserve the right to ship and bill for five percent over or under ordered quantity.

**BLANK ITEM ORDERS:** Use next column pricing.

**PAYMENT TERMS:** Net 30 days upon credit approval.

**PRODUCT GUARANTEE:** All products are warranted to be of the highest quality and defective products will be replaced without charge. Liability limited to amount of invoice.

**RETURNS:** All claims must be submitted in writing within 30 days from receipt of goods. Returned merchandise will not be accepted without a company issued return authorization number. Goods must be returned within 15 working days of authorization issuance or the claim will be void.

**REPEAT ORDERS:** No set up charge for orders that are less than two years old. When reordering, specify previous purchase order number on current purchase order.

**CANCELLATION:** Customer is responsible for all costs incurred after production starts.

**SHIPPING:** Standard orders will ship from ZIP Code 61776 via FedEx®.

**FREIGHT CLAIMS:** Recourse with carrier is the responsibility of the customer. Title to merchandise passes to consignee on carrier pickup.

**PROP65 COMPLIANCE:** Prop65 labeling available upon request. See website for updated compliance information.




## STANDARD IMPRINT COLORS

Products are available with 21 different imprint ink colors at no additional charge. If a color other than described below is needed, be certain to specify the PMS coated color number or name. \$50G charge for PMS Matching.

### STANDARD COLORS

					
BLACK	WHITE	COOL GREY #7	PINK PMS 212C	RED PMS 485C	ORANGE PMS 021C
					
YELLOW PMS 012C	MEDIUM GREEN PMS 3405C	DARK GREEN PMS 349C	TEAL PMS 326C	MAROON PMS 208C	BROWN PMS 498C
					
LIGHT BLUE PMS 306C	PROCESS BLUE C	MEDIUM BLUE PMS 293C	DARK BLUE PMS 661C	REFLEX BLUE	PURPLE PMS 258C

### METALLIC COLORS

		
METALLIC GOLD PMS 871C	METALLIC SILVER PMS 877C	METALLIC COPPER PMS 876C



## SAMPLE CHARGES

**RANDOM SAMPLES:** Free samples with provided shipper number.

**BLANK SAMPLES:** Free samples with provided shipper number.

**SPEC SAMPLES:** 25% off EQP with \$50G setup charge, per color/location decorated with customer supplied artwork.

**SELF-PROMOTIONS:** 25% off EQP with \$25G setup charge, per color/location with provided shipper number. Decorated with customer supplied artwork

## SERVICE CHARGES

**SETUP:** \$50G per imprint color/location, applied to all orders except exact repeats within two years.

**COPY CHANGE:** \$50G will be applied per copy change. Each copy change must meet catalog minimums or a less than minimum charge will apply.

**LESS THAN MINIMUM:** \$50G applied to orders that are less than first column quantity. Absolute minimum is half of first column. LTM not available on emery boards.

**RUN CHARGE:** \$.30G per additional color and/or location.

**SCREEN WASH:** \$20G per color change.

**PMS MATCH:** \$50G charge for PMS Matching for all non-standard colors.

**VIRTUAL PROOF:** No charge.

**EMAIL/PAPER PROOF:** No charge. Production begins after receipt of proof approval.

**RUSH ORDER:** No charge. Contact for availability. Orders must be received by 12:00 PM CST.

**PRICING:** All pricing in US Dollars.

**PRE-PRODUCTION SAMPLES:** \$50G Production begins after receipt of proof approval.

**EXACT QUANTITIES:** No charge. Must be stated on purchase order.

**ART RECONSTRUCTION:** \$50G minimum for first 30 minutes. An additional \$50G per 30 minute increments.

**POLY BAG:** \$.075G per item on items where a poly bag is not standard.

**LABELS:** \$.07G per item to attach customer supplied labels.

**MULTIPLE ITEM POLY BAG:** \$.05G per item.

**INSERTION:** \$.32G per item to combine customer supplied item(s) with stock item(s).

**DROP SHIP:** \$7.50G applied to each "ship to" after the first "ship to" address.

**THIRD PARTY HANDLING:** \$12G per order.

**INTERNATIONAL SHIPMENTS:** All duty and tax charges are the responsibility of the customer. All declaration documentation will include the retail value of goods, unless otherwise instructed by customer.

**PERSONALIZATION:** \$1.00(A) on laser engraved items.

**RELEASE CHARGE:** No release charge.

## NOTE ON PRICING

We make every effort to maintain our catalog pricing through the end of the year. However, unplanned challenges may impact our pricing. Please see website for current pricing. Thank you.

